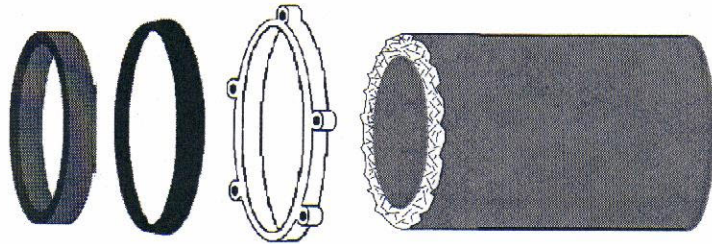


# Installation Instructions For the "Snap-Sert"

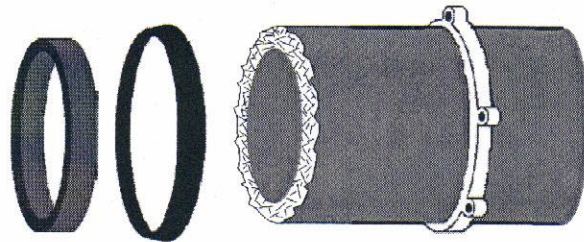
Step 1 Apply liberal amounts of NSF approved pipe thread compound (pipe dope) to the inside top of the "Snap-Sert".



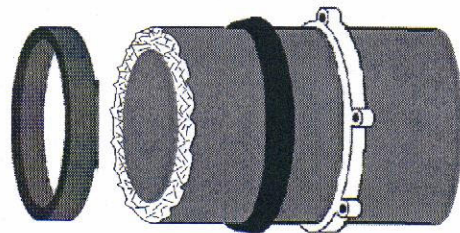
Step 2 Have ready a piece of cut Asbestos Cement pipe which is free of all loose fragments. Also have a follower (gland), a rubber gasket, and the "Snap-Sert" (with pipe dope applied).



Step 3 Put the follower (gland) in position first, placing it out of the work area and behind the cut end of Asbestos Cement pipe.



Step 4 Put the rubber gasket on next, ahead of the follower (gland) and behind the cut end of Asbestos Cement pipe.



Step 5 Put on the "Snap-Sert", sliding it completely on the pipe until it can be pushed no further. You may then proceed with the fastening of the fitting or repair coupling.

